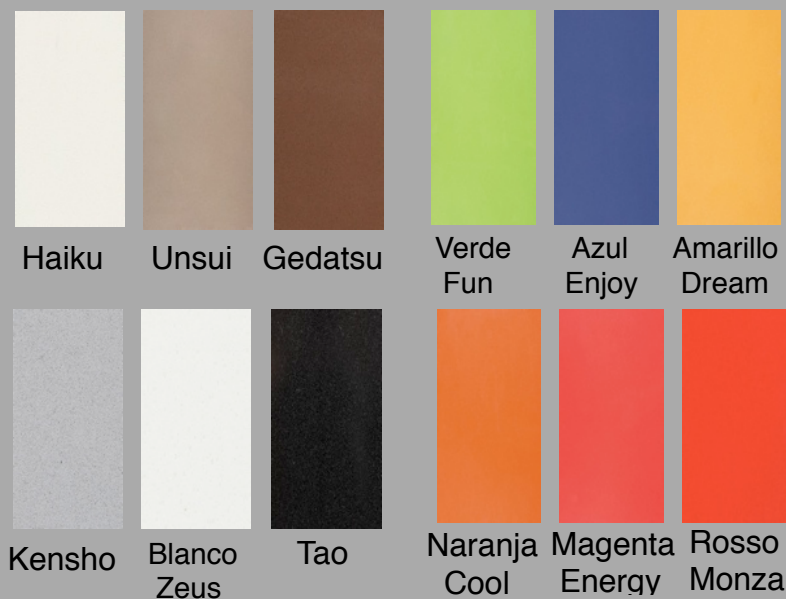
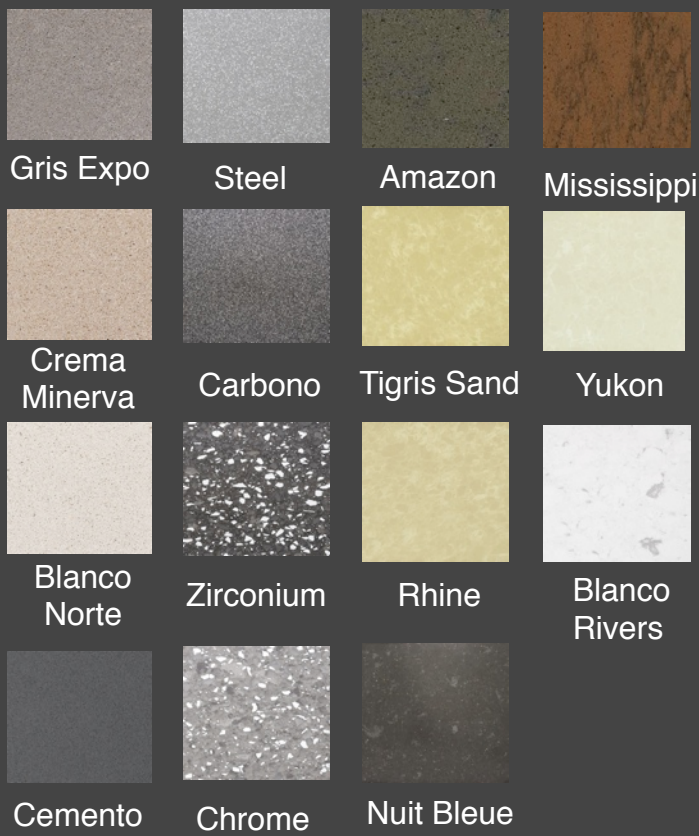




**SILESTONE®**  
by COSENTINO

**ASHTON  
TECHNOLOGIES**



*Open your mind to endless design possibilities.*

- MADE IN SPAIN.
- SILESTONE is the ONLY quartz surface with anti-bacterial protection built-in into the entire slab to effectively suppress the growth of harmful bacteria and other odor-causing microbes, mold and mildew 24/7 for the life of the product.
- SILESTONE is 93% quartz (#7 in the Mohs hardness scale. Diamond is 10. Marble is 3-4. Granite is 5-6) making it highly resistant to scratch, stains and scorch marks.
- SILESTONE is non-porous so it doesn't need to be sealed making it virtually maintenance free and easy to clean.

- Comes with a 10 year limited warranty.
- Over 65 colors with a natural shade and tone consistency not found in natural stone. Available in polished, leather and volcano finish.
- SILESTONE has the most relevant certificate in Quality, Environment and Health Safety:
  - ★ NSF certified for use in food preparation areas
  - ★ GREENGUARD indoor air quality certification
  - ★ Microban antibacteria certified
  - ★ BVQi certified ISO 9001:2000
  - ★ BVQi certified ISO 14001:2004
  - ★ UNE 166002:2002 certification



## ECO by Cosentino is ...

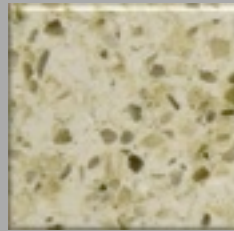
- A durable surface.
- Made of 75% recycled content composed of post-industrial or post-consumer materials.
- Bound by an environmentally friendly resin which comes in part from corn oil.

### Attributes ...

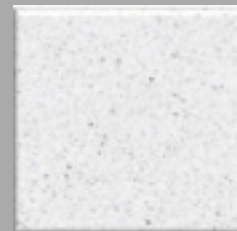
- High performance against staining, scratching and scorching.
- Non-porous, does not require sealers.
- Available in 10 designer colors.
- Available in 327cm x 159cm slab.
- Building terms can gain up to 5 points toward **LEED CERTIFICATION** from the U.S. Green Building Council for a building project with ECO surfacing.
- Cradle to Cradle (C2C), Greenguard, NSF, and LEED certified.



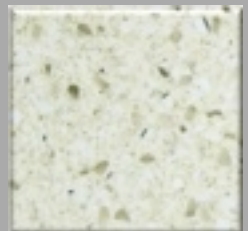
## Green Collection



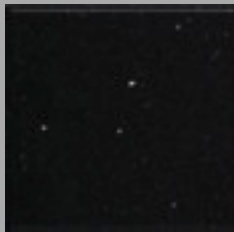
Crystal Sand



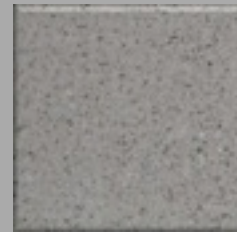
Polar Cap



Luna



Starlight



Crystal Ash



Black Forest

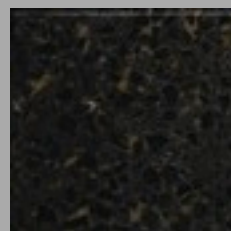
## Revive Collection



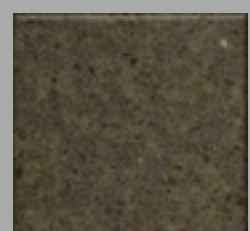
White Diamond



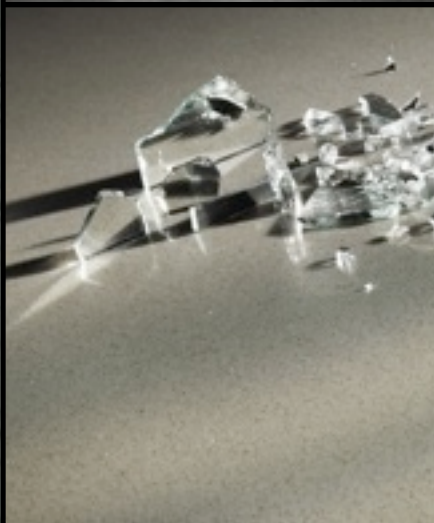
River Bed



Terra



Iron Ore





Add distinction to any design project with the Prexury Collection by Cosentino.

Enjoy the luxury of semi-precious stones, artfully handcrafted into a high-performance yet uniquely beautiful surface. Quality and exclusivity guaranteed with an ASP (Authentic Semi-Precious Stone) Certificate.

Choose from twelve exotic colors.



*"Make your home a work of ART"*

Exclusively distributed by:

## Ashton Technologies Corp.

Showroom: MC HomeDepot Fort Bonifacio  
359-0755 . 364-5472

Fax: 638-7883

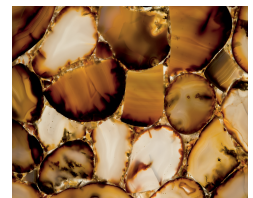
info@ashton-technologies.com .  
www.ashton-technologies.com



Amethyst



Angel Jasper



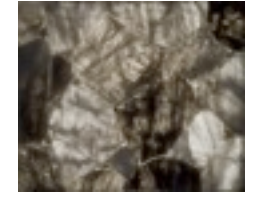
Carnelian



Wild Agate



Classic Quartz



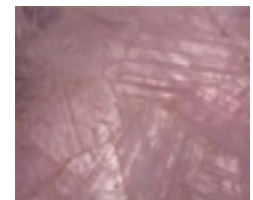
Smoky Quartz



Retro Petrified Wood



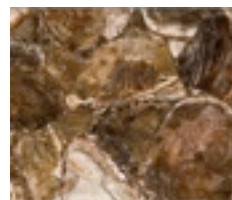
Retro Tiger Iron



Rose Quartz



Labradorite



Petrified Wood

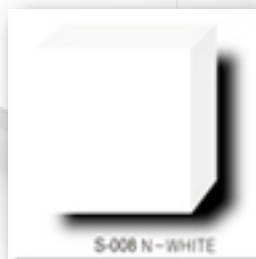


Red Jasper



Solo

Trio



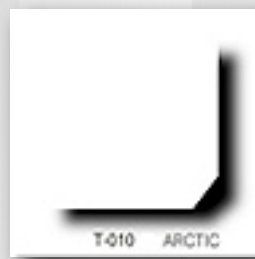
S-006 N-WHITE



S-002 WHITE



T-006 CLOUDY



T-010 ARCTIC



T-020 SUNSTAR



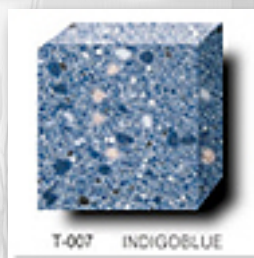
S-004 IVORY



S-006 GREY



T-001 ELDRADO



T-007 INDIGOBUE

Duo

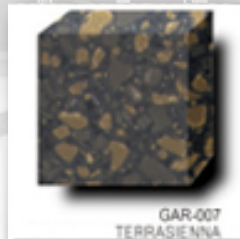
Galleria



D-003 GOLDBROWN



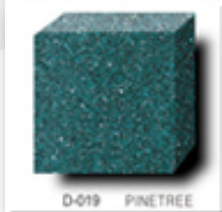
D-001 SILVERSTONE



GAR-007 TERRASENA



GAM-001 MONET AFTERSNOW



D-019 PINETREE



D-007 MIST



D-015 BLACKHILL



D-003 GOLDBROWN



D-018 EASTSEA



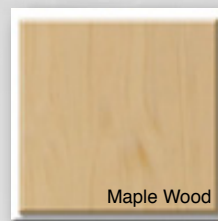
D-009 SANDBANK

Pearl

Bellasimo



P-001 PEARLBLACK



Maple Wood

100% Acrylic Solid Surfaces

# Hanex



Proudly Canadian made

*The sinks of choice  
worldwide*

***Kindred Designer Series***

18 gauge, 0 radius and 10 mm radius undermount sinks



KCUS24A/10-10BG



KCUS30A/10-10BG



KCUD36/9-0BG

***Kindred Undermount Collection***

18 gauge, 18-10 stainless steel undermount sinks



KSS4UA/9D



KSS5UA/9D



KSS6UA/9D



KSD1UA/9D



KSDCRU/9



KST1UA/9D

***Steel Queen Undermount Collection***

18 gauge, 0 radius and 10 mm radius undermount



QSU1831/8



QDU1831/8



QCU1831R/8

***Kindred  
Faucets***



KF10A



KF10B



KF10C

***Waste Disposers***



KWD50A

ASHTON TECHNOLOGIES CORP.

Showroom: MC Home Depot Fort Bonifacio . 359-0755 . 364-5472 . Fax: 638-7883

[info@ashton-technologies.com](mailto:info@ashton-technologies.com) . [www.ashton-technologies.com](http://www.ashton-technologies.com)